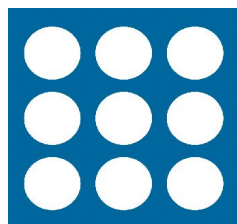


Generic Gateway Interoperability Tests



enum.at
net.communications

Version history:

<i>Version</i>	<i>Date/author</i>	<i>Changes</i>
0.1	18.10.2004/Klaus Darilion	initial version
0.2	21.12.2004/Klaus Darilion	SNOM200, SJPhone

Snom 200 (H.323 direct routed)

Hersteller	SNOM; http://www.snom.com/
Produkt	SNOM 200
Software Version	H.323 Image Version 2.04n 5330 (Anzeige im Display)
Protokoll	H.323
Testdatum	18.10.04
Testszenario	Basic Call GG --> SNOM 200, direct routed; NAPTR: 2.0.8.7.3.4 NAPTR 100 10 "u" "E2U+h323" "!^.*\$!h323:ramon@Y.Y.Y.22!" .
Getestete Codecs	G.711 u-law
Ansprechperson enum.at	Klaus Darilion; klaus.darilion@enum.at
Ansprechperson Hersteller	Klaus Darilion; klaus.darilion@enum.at
Gateway Version	Version 18.10.2004
Gateway Konfiguration	Konfiguration 18.10.2004
Anmerkungen (Konfigurationshi nweise oder Tips, Einschränkungen)	<ul style="list-style-type: none">• Mit Version 2.02t: Wenn das SNOM Telefon auflegt, wird vom Gateway ein: Oct 18 10:57:03.253 GMT: ISDN Se0:15 Q931: TX -> DISCONNECT pd = 8 callref = 0x814E Cause i = 0x809B - Destination out of order generiert. Dass erzeugt einen SIT! Dieses Problem tritt mit Firmware 2.04l und 2.04n nicht auf!!!• Die Versionsanzeige über den eingebauten Webserver ist meistens nicht ident mit der am Display des Telefons. Anscheinend wird im Browser die zuvor verwendete Version angezeigt. Wenn zweimal das gleiche Image geflasht wird, dann stimmen die beiden Versionen überein.

Base Settings

Version

Version
snom200-H323 2.04n

Bootloader URL
<http://www.snom.com/download/snom200-boot1.9.bin>

Firmware URL
<http://www.snom.com/download/snom200-2.02t-H323.bin>

Reset

Reboot

Base

Language	<input type="text" value="English"/>
Number Display Style	<input type="text" value="Name"/>
Phone type	snom200-H323
Download Embedded Images	<input type="text" value="From Phone"/>
Call Completion	<input type="radio"/> on <input checked="" type="radio"/> off
Number Guessing	<input checked="" type="radio"/> on <input type="radio"/> off
Block Dial	<input checked="" type="radio"/> on <input type="radio"/> off
Block url dialing	<input type="radio"/> on <input checked="" type="radio"/> off
Call Waiting Indication	<input checked="" type="radio"/> on <input type="radio"/> off
Dialtone during Hold	<input checked="" type="radio"/> on <input type="radio"/> off
Disconnect on Onhook	<input checked="" type="radio"/> on <input type="radio"/> off
Administrator Mode	<input checked="" type="radio"/> on <input type="radio"/> off
Administrator Password	<input type="text" value="****"/>
Administrator Password (Confirmation)	<input type="text" value="****"/>

Settings

H323

E164 No.	<input type="text"/>
H323 ID	<input type="text"/>
URL ID	<input type="text"/>
GK/GW Mode	<input type="text" value="Gatekeeper"/>
GK/GW IP Address	<input type="text"/>
GK TTL	<input type="text" value="600"/>
Message Center Number	<input type="text"/>
Dynamic RTP port start	<input type="text"/>
Dynamic RTP port end	<input type="text"/>
Early Start	<input checked="" type="radio"/> on <input type="radio"/> off
Fast Start	<input type="radio"/> on <input checked="" type="radio"/> off
H.245 Tunneling	<input type="radio"/> on <input checked="" type="radio"/> off
Tracing	<input checked="" type="radio"/> on <input type="radio"/> off
H.450 Services	<input type="radio"/> on <input checked="" type="radio"/> off
Logon Wizard	<input checked="" type="radio"/> on <input type="radio"/> off

Codec Settings

Codecs

Default codec	<input type="text" value="G.711u"/>
Packet size	<input type="text" value="20 ms"/>
Negotiation	<input type="text" value="Interoperable"/>
Type of Service (TOS)	<input type="text" value="160"/>

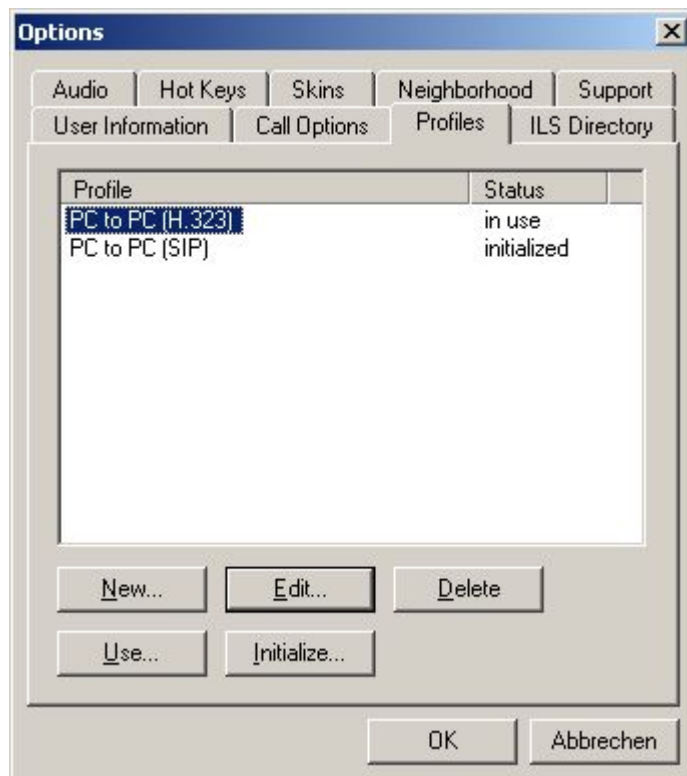
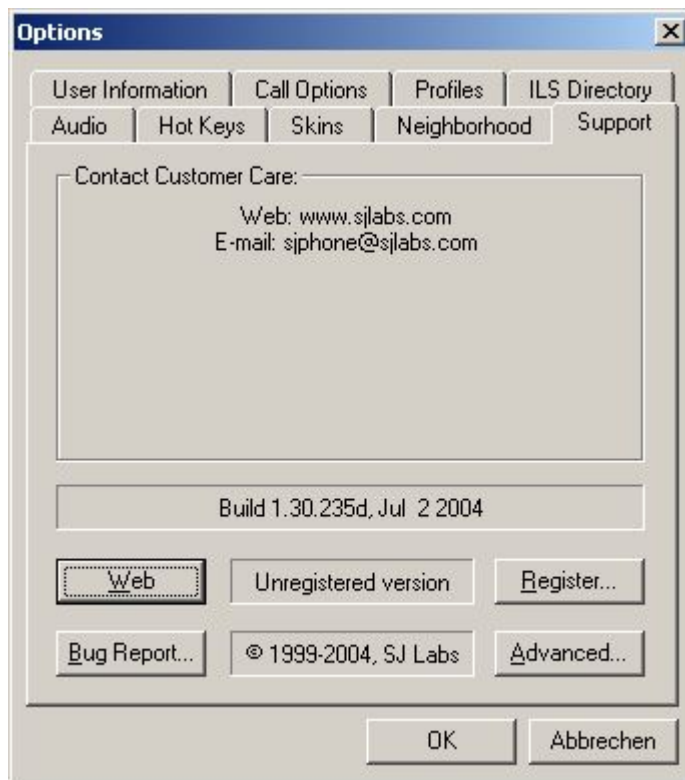
DTMF

Inband	<input type="text" value="off"/>
Outband	<input type="text" value="on"/>
Payload Type	<input type="text" value="101"/>

SJPhone (H.323 direct routed)

Hersteller	SJ Labs
Produkt	SJPhone
Software Version	Build 1.30.235d, Jul 2 2004 on Windows XP prof. german SP 1
Protokoll	H.323
Testdatum	
Testszenario	Basic Call;
Ansprechperson enum.at	Klaus Darilion; klaus.darilion@enum.at
Ansprechperson Hersteller	Klaus Darilion; klaus.darilion@enum.at
Gateway Version	
Gateway Konfiguration	
Anmerkungen (Konfigurationshi nweise oder Tips, Einschränkungen)	





Options [X]

Audio | Hot Keys | Skins | Neighborhood | Support
User Information | Call Options | Profiles | ILS Directory

Name:


E-mail:

Location:

Comments:

Image

Use image:

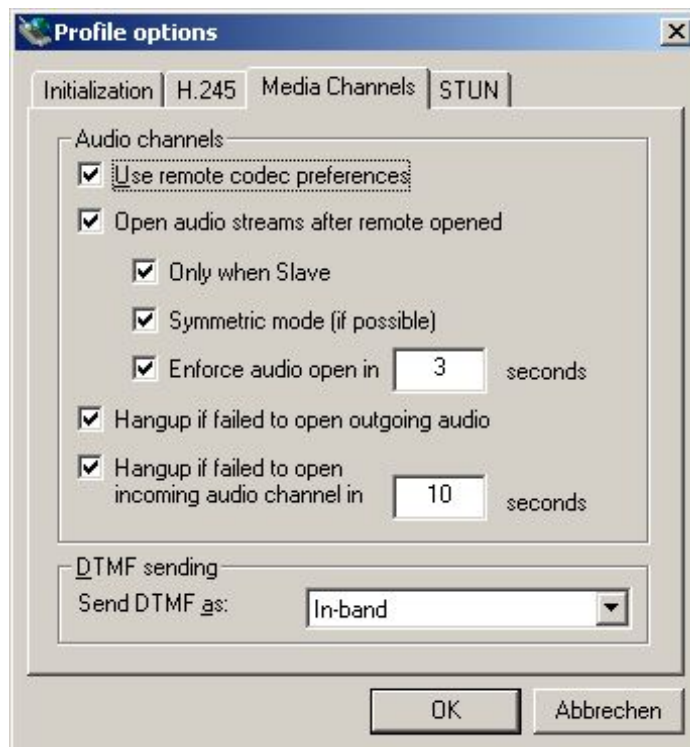
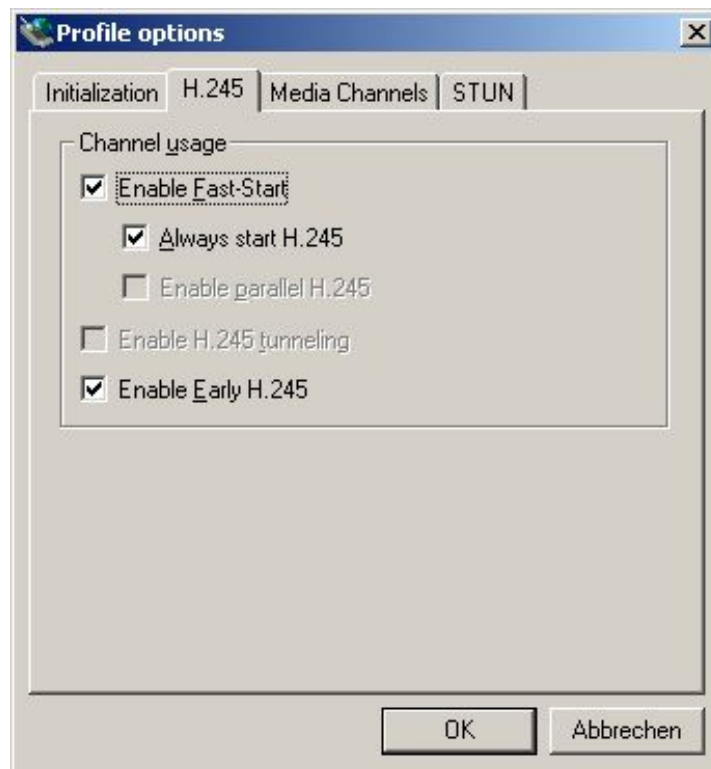
 Image should be a 32x32 bmp, png or jpeg file less than 10 Kb.

Profile options [X]

Initialization | H.245 | Media Channels | STUN

User data: Inquired Saved Required

Caller ID:



Profile options [X]

Initialization | H.245 | Media Channels | **STUN**

Server Address: :

Advanced Options

Refresh timeout:	<input type="text" value="1200000"/>
Conclusive response timeout:	<input type="text" value="0"/>
Retransmissions number:	<input type="text" value="13"/>

OK Abbrechen